

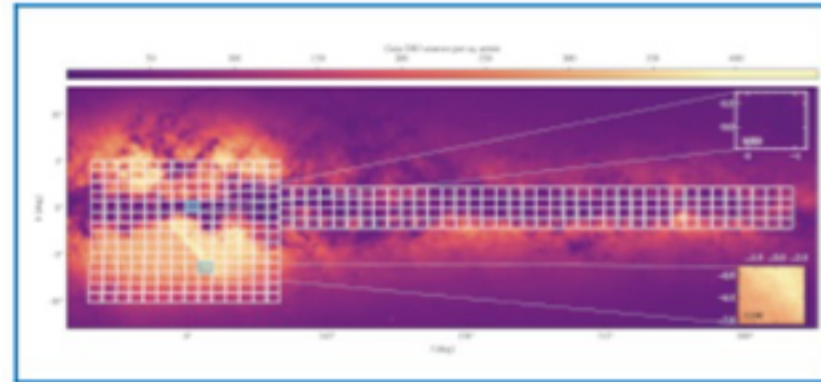
By using this website, you agree that EDP Sciences may store web audience measurement cookies and, on some pages, cookies from social networks. [More information and setup](#)

## Astronomy & Astrophysics

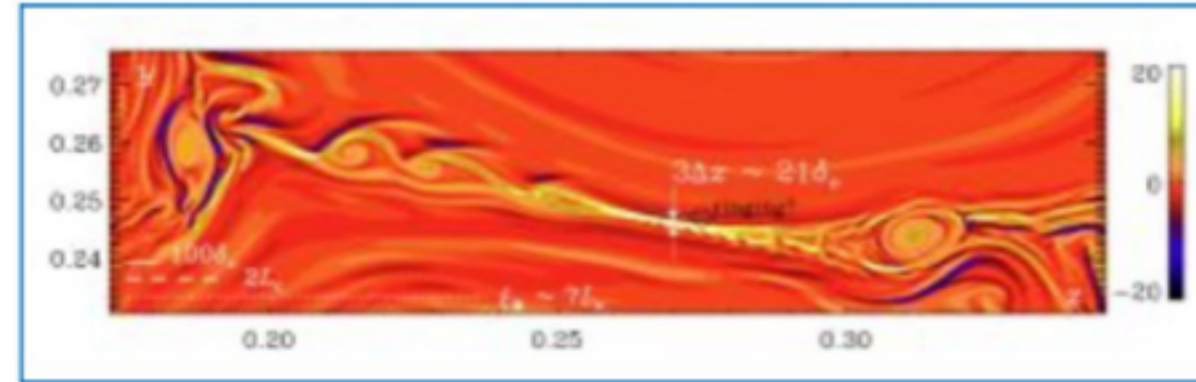
Volume 687 (July 2024)



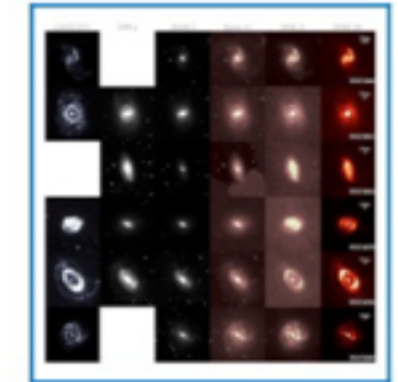
JWST/MIRI mid-IR image of the edge of the Horsehead (© ESA/Webb, NASA, CSA, K. Misselt (University of Arizona) and A. Abergel (IAS/University Paris-Saclay, CNRS)) (Abergel, A., et al., 2024, [687, A4](#))



*Gaia* DR3 source density around the VV survey (Griggio, M., et al., 2024, [687, A94](#))



Fine structure of currents in magnetic turbulence (Brandenburg, A., et al., 2024, [687, A186](#))



Multi-band observations of six nearby barred galaxies (Scaloni, L., et al., [687, A255](#))

Sort by Section  Sort by article number

Export the citation of the selected articles [Export Select all](#)